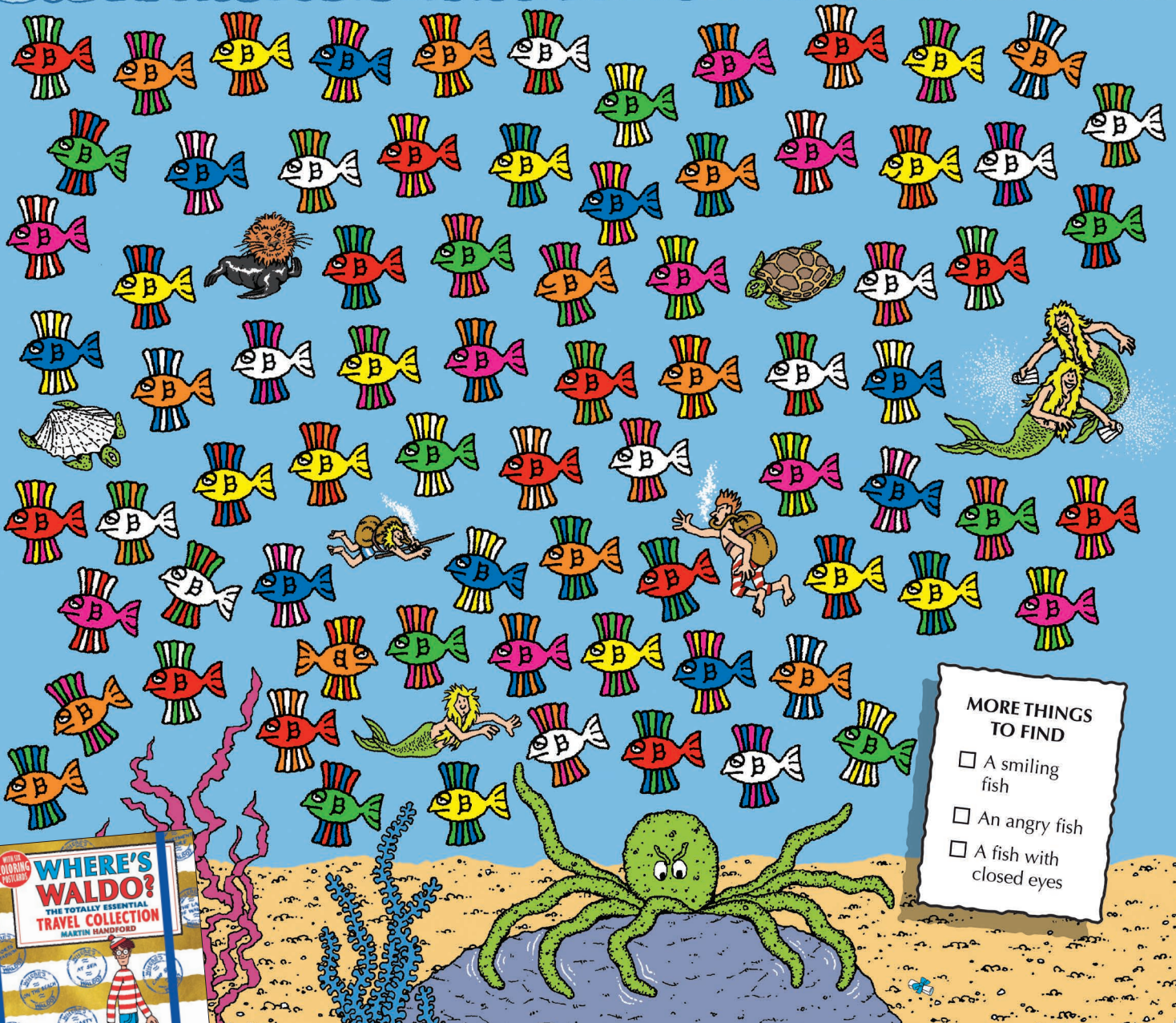
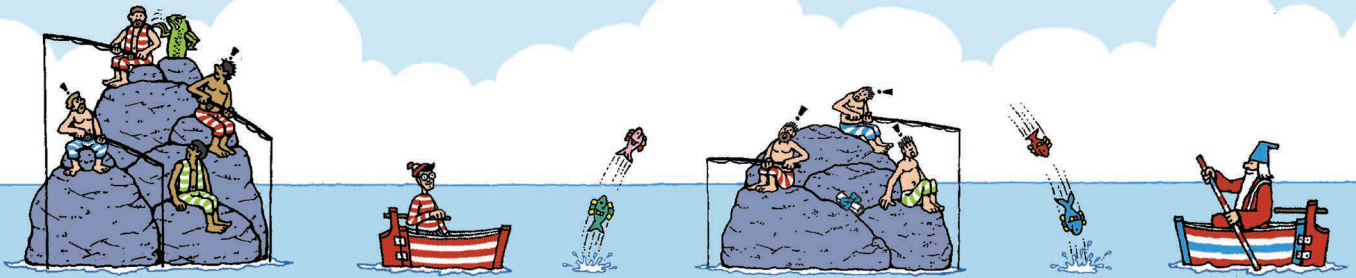


Illustrations copyright © 2006-2013 by Martin Handford



# Waldo and his friends are enjoying a day at sea, but something is fishy!

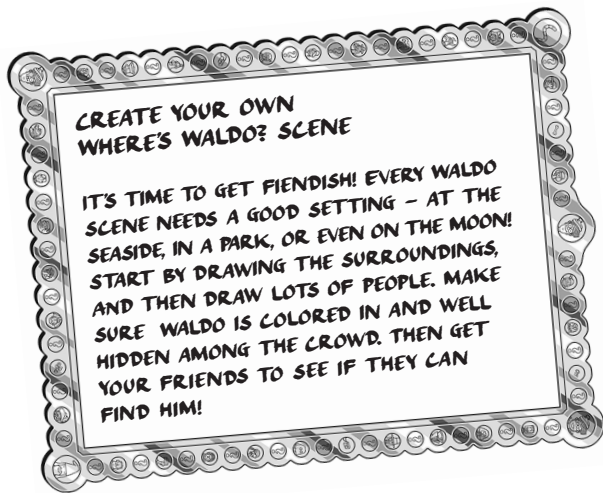
Match up the sets of three identically colored fish. One fish is not part of a set, so have a splish-splashing time finding out which one!



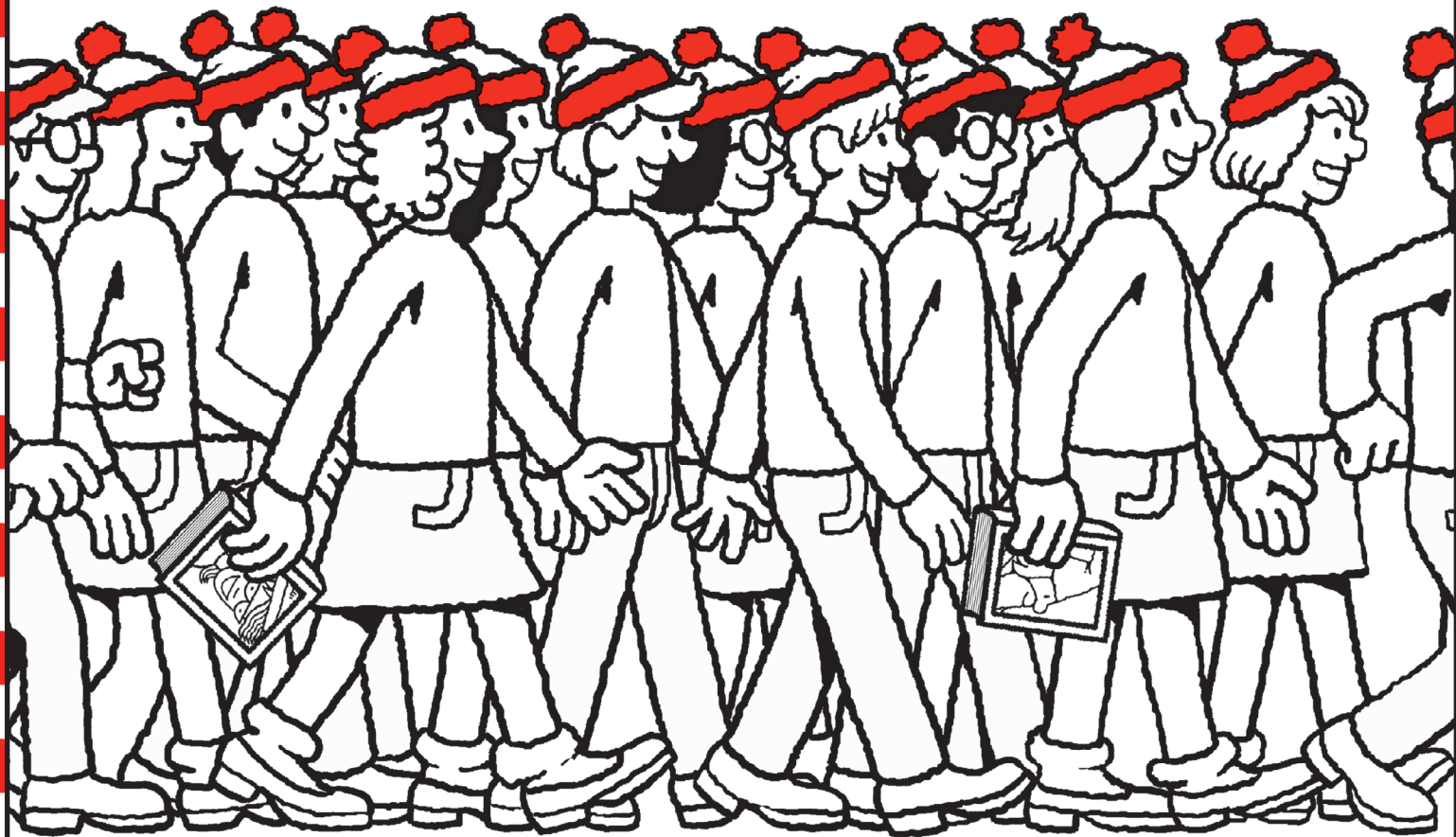
## MORE THINGS TO FIND

- ☐ A smiling fish
- ☐ An angry fish
- ☐ A fish with closed eyes

Take Waldo on all your summer adventures with  
*Where's Waldo? The Totally Essential Travel Collection.*







**GIVE SOME WALDO-WATCHERS STRIPED TOPS (OR ANY OTHER DESIGN YOU LIKE)!**



**30**  
**YEARS OF**  
**WHERE'S**  
**WALLY?**

## MAKE A MONSTROSITY

Create your very own sea creature and colour in the surrounding scene. What do you think is lurking at the bottom of this deep, dark sea? Eeek!

